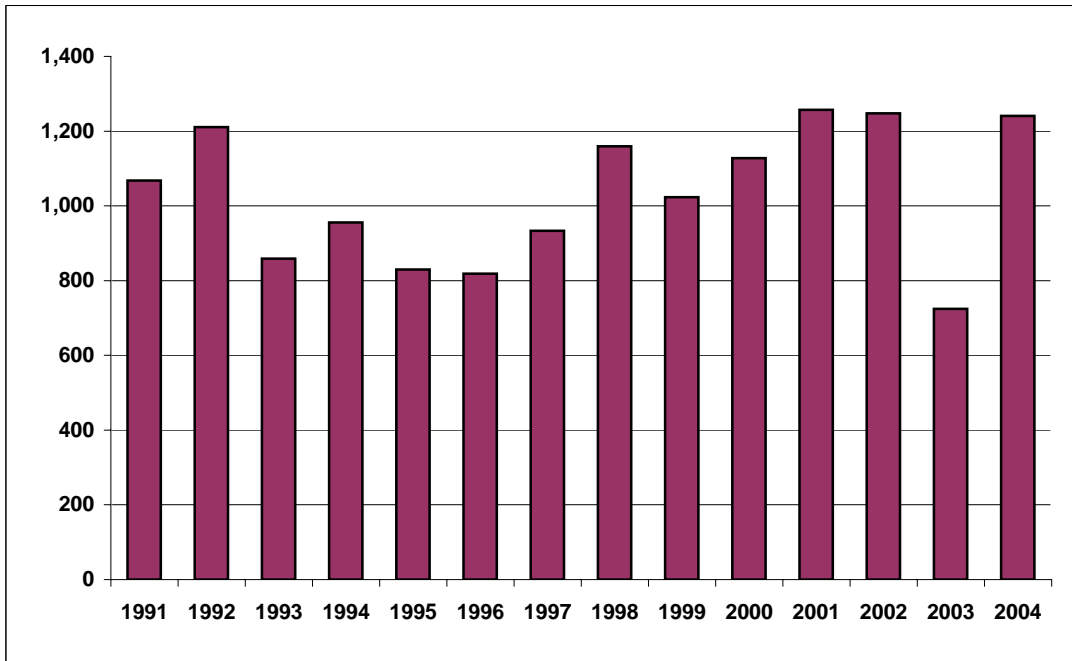


LAW ENFORCEMENT OFFICERS ASSAULTED TREND 1991 - 2004



YEAR	NUMBER	PERCENT OF CHANGE
1991	1,068	- 0.9
1992	1,211	+ 13.4
1993	859	- 29.0
1994	956	+ 11.3
1995	830	- 14.3
1996	819	- 1.3
1997	933	+ 13.9
1998	1,159	+ 24.2
1999	1,023	- 3.4
2000	1,128	+ 10.3
2001	1,257	+ 11.4
2002	1,248	- 0.7
2003	724	- 42.0
2004	1,241	+ 71.4

Assaults on Law Enforcement Officers 2004 Assignment by Circumstances

<i>Circumstance</i>	<i>Two Person Vehicle</i>		<i>One Person Vehicle</i>		<i>Detective</i>		<i>Other</i>		<i>Total Assaults</i>	<i>Assaults</i>	<i>Percent Cleared</i>
	<i>Alone</i>	<i>Assisted</i>	<i>Alone</i>	<i>Assisted</i>	<i>Alone</i>	<i>Assisted</i>	<i>Alone</i>	<i>Assisted</i>			
<i>Disturbance</i>	76		97	288	4	3	4	12	484	436	90.08
<i>Burglary</i>	1		1	7	0	0	0	0	9	6	66.66
<i>Robbery</i>	0		0	5	0	0	0	0	5	5	100
<i>Other Arrest</i>	11		45	59	2	6	2	13	138	113	81.88
<i>Civil Disorder</i>	1		3	5	0	1	0	0	10	10	100
<i>Prisoners</i>	4		26	30	0	1	12	62	135	80	59.25
<i>Suspicious</i>	17		29	26	0	2	0	2	76	67	88.15
<i>Ambush</i>	2		0	0	0	0	0	0	2	2	100
<i>Mentally Disturbed</i>	4		6	14	0	1	0	15	40	30	75
<i>Traffic</i>	22		64	91	0	0	1	2	180	140	77.77
<i>All Other</i>	17		20	70	2	6	4	8	127	101	79.52
<i>Total</i>	155		291	595	8	20	23	114	1206	990	82.08

Assaults on Law Enforcement Officers 2004]

Twenty-Four Hour Trend

<i>Time</i>	<i>A.M.</i>	<i>P.M.</i>
<i>12:01 - 2:00</i>	246	78
<i>2:01 - 4:00</i>	161	91
<i>4:01 - 6:00</i>	38	93
<i>6:01 - 8:00</i>	26	107
<i>8:01 - 10:00</i>	34	167
<i>10:01 - 12:00</i>	27	173
<i>Total</i>	532	709

Assaults on Law Enforcement Officers 2004

Occurrence of Injury by Weapon

	<i>With Injury</i>	<i>Without</i>	<i>Total</i>
<i>Firearm</i>	6	28	34
<i>Knife</i>	2	15	17
<i>Other Weapon</i>	17	66	83
<i>Hands, Fists, Feet, Etc</i>	164	943	1107
<i>Total</i>	189	1052	1241

Assaults on Law Enforcement Officers 2004

Weapon Use by Circumstance

	<i>Firearms</i>	<i>Knife</i>	<i>Other Weapon</i>	<i>Hands, Fist Feet, Etc.</i>	<i>Total</i>
<i>Disturbance</i>	14	11	17	465	507
<i>Burglary</i>	0	0	4	5	9
<i>Robbery</i>	0	0	0	5	5
<i>Other Arrest</i>	4	2	12	121	139
<i>Civil Disorder</i>	0	0	0	10	10
<i>Prisoners</i>	0	0	4	131	135
<i>Suspicious</i>	2	3	7	64	76
<i>Ambush</i>	0	0	0	2	2
<i>Mentally Disurbed</i>	0	2	1	39	42
<i>Traffic</i>	8	0	32	142	182
<i>All Other</i>	1	0	13	120	134
<i>Total</i>	29	18	90	1104	1241